

The MTH4 is built for a range of off-road applications. The unit is designed for remote installation and mechanical interface with a throttle position sensor.

In addition, the remote sensor control unit can be customized with contact or PWM sensors.

The Remote Sensor Control is environmentally protected, allowing it to be mounted inside or outside the cab. It is made out of aluminum with SPCC lever.



※ The lever can be adapted to meet specific customer requirement.

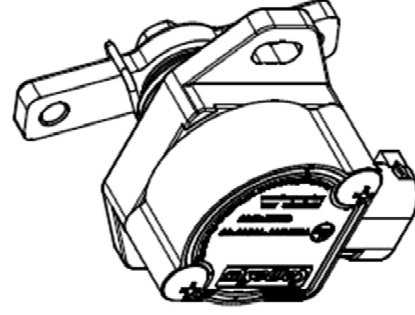
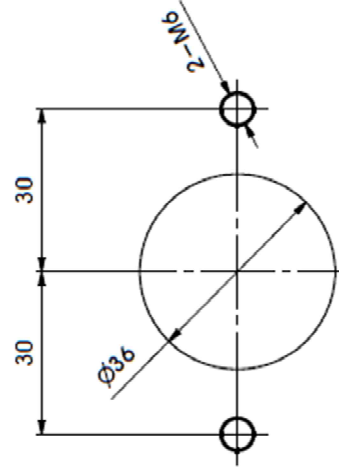
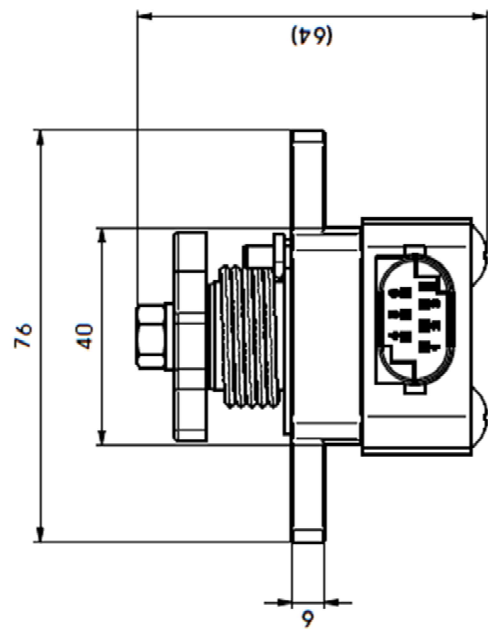
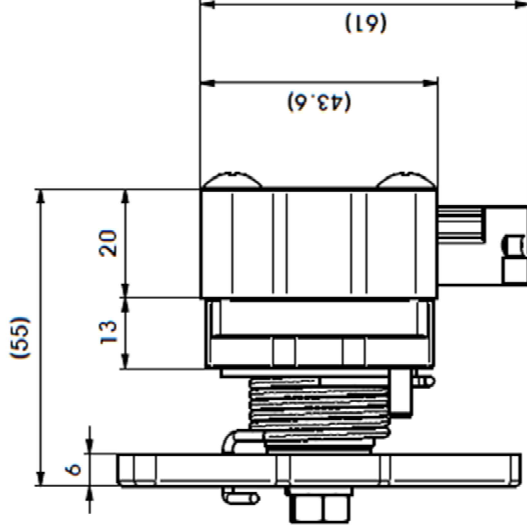
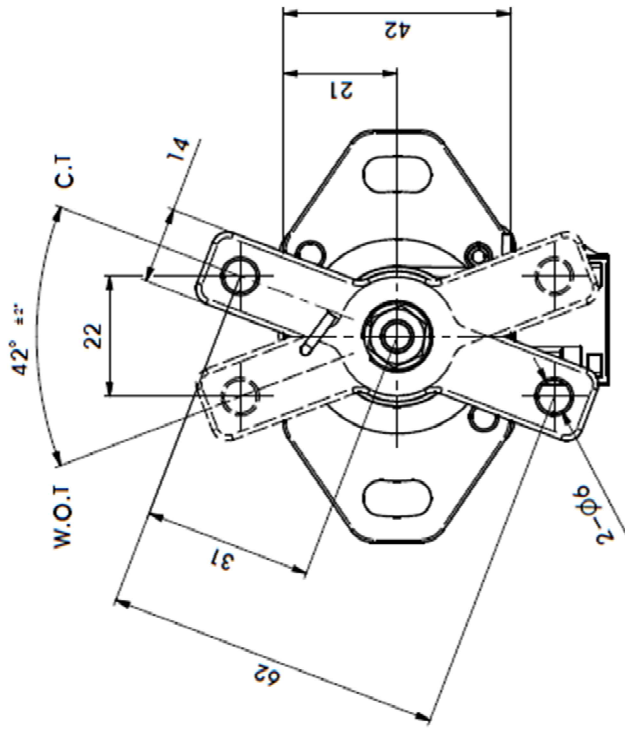
SPECIFICATIONS

PRODUCT LIFE	FULL TRAVEL CYCLES	10 MILLION
ELECTRONICS	SEAL INTEGRITY	IP67
	EMI	SAE J1843 Compliant
ELECTRICAL	OPERATING VOLTAGE	5, 12, 24, 48 72Vdc as requested
	OUTPUT SIGNAL	Single, Dual output, PWM, CAN Bus as per SAE J-1939
PEDAL ANGLE	DEGREES	42°
MECHANICAL	LOAD	Initial Load : 20N (MIN), Full Throttle : 30N (MAX)
	VIBRATION	8 Hour, 3-Axis, Random Broadband up to 9G
ENVIRONMENTAL	OPERATING TEMP RANGE	-40°C to 85°C
	STORAGE TEMP RANGE	-40°C to 85°C
	HUMIDITY	After Exposed to -32°C ~ 70°C (96%)
	SAND/DUST	Tested to SAE-J 1455
MATERIALS	MAIN BODY	Aluminum Diecasting (ADC12)
	LEVER	SPCC

Part No. -

REVISION HISTORY

REV	DESCRIPTION	DATE	DR	RE	AP
0	Issued	31.Mar.20	M.J.Kim	J.I.Kim	J.H.Lee



Mounting Patten

ComeSys		Central & Mechatronics Systems Limited		Throttle Position Sensor (MTH4)	
Approved Vendor for Mitsubishi AS & L200		Part No. & Description		Application Model	
Part No.	023	MTH4		-	
Part Name	Throttle Position Sensor	MTH4		-	
Part No.	023	MTH4		-	
Part Name	Throttle Position Sensor	MTH4		-	
Part No.	023	MTH4		-	
Part Name	Throttle Position Sensor	MTH4		-	
DR	M.J.Kim	31.Mar.20	Do Not Sign	220	220
DR	J.I.Kim	31.Mar.20	TRNG And Projection	220	220
DR	J.H.Lee	31.Mar.20	Sheet 1 of 1	220	220