



الشرقية للمعدات ش م م  
ORIENTAL EQUIPMENTS LLC





## ABOUT US

We are established as a private company on March 2009, in Al Duqm, Sultanate of Oman, as a SME company 100% individual investor. We have large number of equipment dedicate for construction. Currently we are also developed our yard 60,000 sqm area in mudhabi, Sinow. From the beginning to until now we are providing all type of construction material asper Oman standard specifications. Our organization with international management to be a solution provider, we received many project inquiries from overseas EPC Contractors and local big companies for civil works and etc. OEL will gradually grow towards excellence in construction and supplier of constructions materials with most trusted mind which will consistently deliver quality material for the costumers.

# CONSTRUCTION EQUIPMENT



**MOBILE CRANE**

**BRAND: TADANO - FAUN**

**CAPACITY: 45 Ton**

**MODEL: FAUN T45**

**RATE PER DAY: 150 R.O/day**



**GRADER**

**BRAND: VOLVO**

**CAPACITY: 3.65 M**

**MODEL: G720 B**

**RATE PER DAY: 150 R.O/day**



**WHEEL LOADER**

**BRAND: VOLVO**

**CAPACITY: 3.2 cum**

**MODEL: 110 F**

**RATE PER DAY: 100 R.O/day**



**BOOM LOADER**

**BRAND: MANITOU**

**CAPACITY: 4 ton / 14 m**

**MODEL: MT 1440**

**RATE PER DAY: 80 R.O/day**



**EXCAVATOR**

**BRAND: VOLVO**

**CAPACITY: 3 cum bucket also hammer**

**MODEL: EC 460**

**RATE PER DAY: 180 R.O/day**



**FLAT BED TRAILER**

**TYPE: 2 AXLES**

**CAPACITY: 12 m/25 ton**

**RATE PER DAY: 150 R.O/day**



**LOW BED TRAILER**

**TYPE: 3 AXLES**

**CAPACITY: 13 m/60 ton**

**RATE PER DAY: 0.600 R.O/km**

- All type of construction material and equipment available for rent purpose.



## ASPHALT & RMC PLANT

### ASPHALT PLANT



**Brand: BENNIGOVAN**  
**Capacity: 160 Ton/Hour**  
**Rate: 10000 R.O/month**



**Brand: SIGMA**  
**Capacity: 280 Ton/Hour**  
**Rate: 20000 R.O/month**



**Capacity: 50 Ton**  
**PMB Tank: 8 nos**  
**60/70 Tank: 11 nos**  
**Rate: 400 R.O/month (60/70), 500 R.O/month (PMB)**

### CONCRETE BATCHING PLANT



**Brand: BETON**  
**Capacity: 60 cum/Hour**  
**Rate: 4000 R.O/month**



**Brand: WIRTGEN SLIPFORM PAVER**  
**Capacity: 5 m wdt**  
**Rate: 5500 R.O/month**

## SCAFFOLDING & SHORING



ITEM: TELESCOPEIC PROPS  
RATE: 0.150 Bz/day/pcs



ITEM: SHORING FRAME  
RATE: 0.200 Bz/day/pcs



ITEM: SET OF DIAGONAL BRACING  
RATE: 0.050 Bz/day/pcs



ITEM: PULL & PUSH PROPS  
RATE: 0.100 Bz/day/pcs

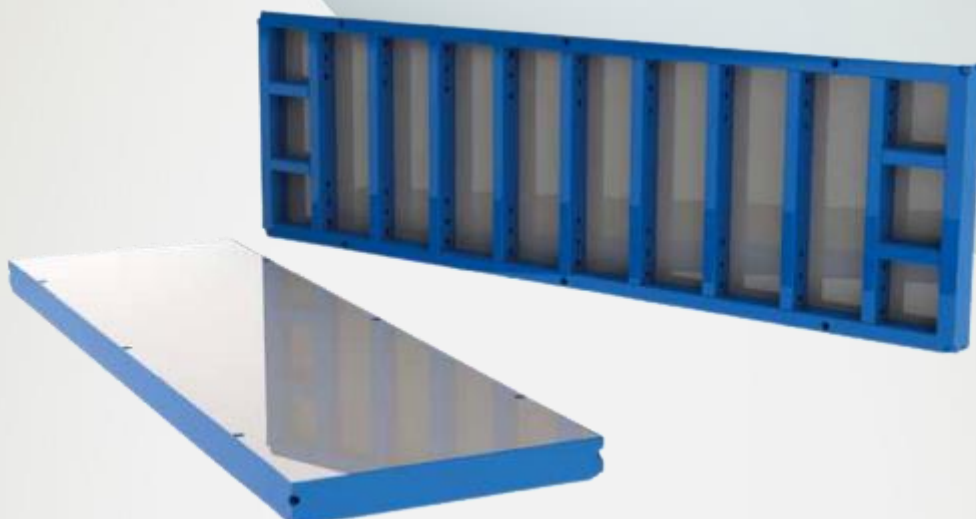


ITEM: VERTICAL CUPLOCK  
RATE: 0.150 Bz/day/pcs



ITEM: CUPLOCK LEDGER  
RATE: 0.100 Bz/day/pcs

## FORM WORK



ITEM: WALL & ROOF FORM WORK PANAL  
RATE: 3.500 R.O/day/pcs



ITEM: DOKA BEAM  
RATE: 0.100 Bz/day/pcs



ITEM: UNIVERSAL PANEL  
RATE: 0.150 Bz/day/pcs



ITEM: INNER CORNER  
RATE: 0.150 Bz/day/pcs



ITEM: CULVERET CORNER  
RATE: 0.150 Bz/day/pcs



ITEM: CULVERET INNER  
RATE: 0.150 Bz/day/pcs

## SCAFF & FORM ELEMENT



ITEAM: SUPPORTING BRACE  
RATE: 0.100 Bz/day/pcs



ITEAM: INTERMEDIATE TRANSOM  
RATE: 0.050 Bz/day/pcs



ITEAM: CUPLOCK SIDE BRACKET  
RATE: 0.050 Bz/day/pcs



ITEAM: FORMWORK STEEL WALER  
RATE: 0.050 Bz/day/pcs



ITEAM: HAND RAIL POST  
RATE: 0.050 Bz/day/pcs



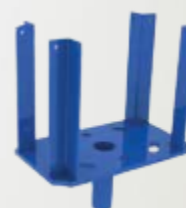
ITEAM: HAND RAIL POST  
RATE: 0.050 Bz/day/pcs



ITEAM: CATWALK BRACKET  
RATE: 0.050 Bz/day/pcs



ITEAM: SPLICE PLATE  
RATE: 0.025 Bz/day/pcs



ITEAM: FORK HEAD STD  
RATE: 0.025 Bz/day/pcs



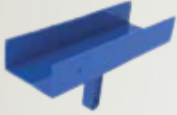
ITEAM: BASE SPINDLE  
RATE: 0.050 Bz/day/pcs



ITEAM: 'U' HEAD SPINDLE  
RATE: 0.025 Bz/day/pcs



ITEAM: SPINDLE  
RATE: 0.025 Bz/day/pcs



**ITEAM: 'U'HEAD BEAM**  
**RATE: 0.015 Bz/day/pcs**



**ITEAM: CRANE HOOK**  
**RATE: 0.015 Bz/day/pcs**



**ITEAM: CONNECTOR**  
**RATE: 0.015 Bz/day/pcs**



**ITEAM: BASE PLATE**  
**RATE: 0.015 Bz/day/pcs**



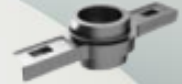
**ITEAM: BEAM CLAMP**  
**RATE: 0.015 Bz/day/pcs**



**ITEAM: CRANE HOOK**  
**RATE: 0.015 Bz/day/pcs**



**ITEAM: PANLE LOCK**  
**RATE: 0.015 Bz/day/pcs**



**ITEAM: SPINDLE NUT**  
**RATE: 0.015 Bz/day/pcs**



**ITEAM: PIN**  
**RATE: 0.010 Bz/day/pcs**



**ITEAM: 'R' PIN**  
**RATE: 0.010 Bz/day/pcs**



**ITEAM: TIE-ROD**  
**RATE: 0.015 Bz/day/pcs**



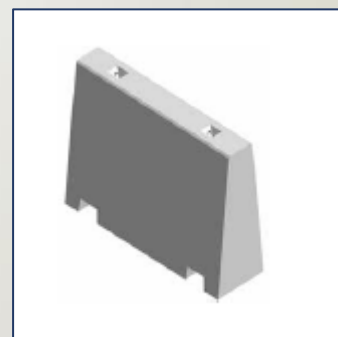
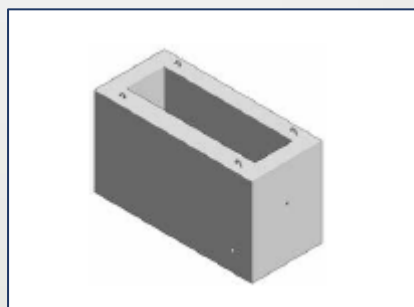
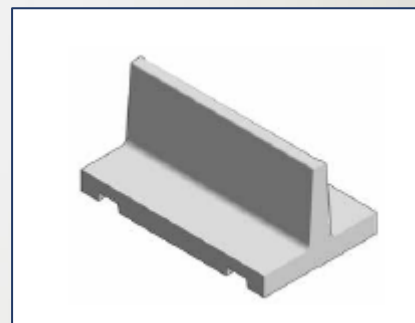
**ITEAM: COUPLER**  
**RATE: 0.010 Bz/day/pcs**

## ELECTRICAL DB

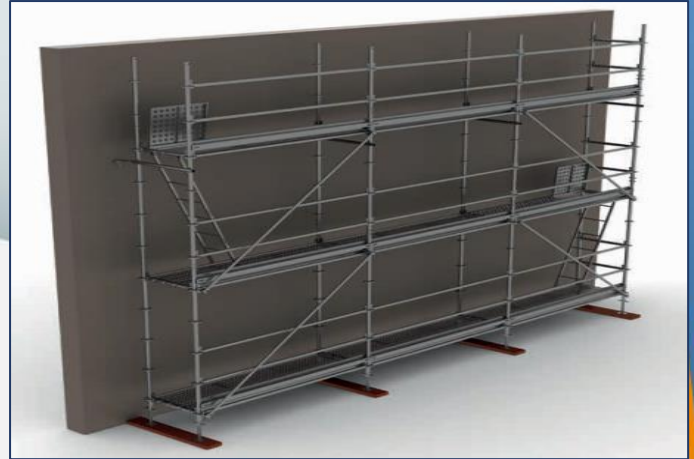


**ITEAM: DISTRIBUTION BOARD**  
**RATE: VARIOUS AS PER AMPERE (R.O 3.000 TO 7.500/day/board)**

# PRE-CAST



# FORM WORK





# الشرقية المعدات ش م م ORIENTAL EQUIPMENTS LLC

GSM # +968-93206765 / +968-94451416

